

Justin Li

li.justin417@gmail.com | [linkedin.com/in/li-justin](https://www.linkedin.com/in/li-justin) | thejustinli.com

Education

University of Waterloo – BAsC in Mechanical Engineering 2024

- Relevant Coursework: [Rapid Prototyping](#), Fuel Cell Technology, Aerodynamics, Mechanical Design
- Engineering Ambassador Executive Lead to support, inform, and plan events for prospective students
- Engineering Orientation Leader & Team Director in 2020, 2021, and 2023

Experience

Lumentum

Process Design Engineering Intern

Ottawa, ON

Jan 2023 – Apr 2023

- [Designed production-ready jigs](#) using [Solid Edge](#) and [3D printing](#) to reduce errors & accelerate production processes
- Built [prototype devices and tools](#) for various optical applications using [Solid Edge](#), including MEMS & LCOS enclosures
- Integrated [laser cutting tech.](#) into the production process to enhance mfg. efficiency and tooling accuracy with high precision at low cost
- Conducted [reliability tests](#) on pre-production products using thermo controllers and data loggers to save time and increase efficiency

University of Waterloo

Energy Engineering Intern

Waterloo, ON

Jan 2022 – Apr 2022

- Reviewed, updated, and designed [HVAC systems](#) and [HVAC technical drawings](#) for the university campus using [Revit](#)
- Analyzed as-built drawings and poorly ventilated classrooms to develop COVID-related HVAC solutions during return to in-person learning
- Performed energy audits by conducting monthly reviews on gas, hydro, and water readings

Vexos

Production Engineering Intern

Toronto, ON

May 2021 – Aug 2021

- Ensured [ISO 13485](#) compliance in [medical device manufacturing](#) by performing equipment validation & assisting with asset management
- Improved production processes by [3D printing](#) custom jigs and fixtures using [SOLIDWORKS](#) and [Ultimaker Cura](#) software
- Led innovation initiatives by coordinating quality inspections, resulting in a [25%](#) increase in certified electronics manufacturing machines

International Custom Products Inc.

Manufacturing Engineering Intern

Toronto, ON

Jan 2020 – Apr 2020

- Managed automation initiatives by [designing and machining](#) solutions that reduced human error in the manufacturing process by over [50%](#)
- Revised technical drawings using [AutoCAD](#) for [CNC cutting equipment](#)
- Performed feasibility assessments of energy usage, upgrading light fixtures to save over [\\$10 000](#) in annual operational costs

Projects

Goal Guard Guru (Robotic Foosball Table)

- Assembling a player versus robot foosball table using [Onshape](#), [3D printing](#), [laser cutting](#), [machining](#), and [Arduino](#) components

Interactive Custom Cassette Player

- Designed, prototyped, and presented an interactive box using [SOLIDWORKS](#), [laser cutting](#), [Arduino](#) components, and [3D Printing](#)

Laser Cutting Template

- Designed, tested, [3D printed](#), and measured templates using [Solid Edge](#) to integrate laser cutting technology into the production process

Various Personal 3D Printing Projects

Personal Portfolio Website

Achievements

- University of Waterloo Student Exchange Program at Lund University, Sweden
- Recipient of the University of Waterloo [Global Experience Certificate](#) degree
- Glider & Private [Pilot Licenses](#)

Sept 2022 – Jan 2023

Jun 2024

2017 - 2018

Interests

Hobbies: 3D printing, Aviation & flying, Ice hockey, Travel & Portrait photography, Video editing, Playing music, Competitive Rubik's cubing

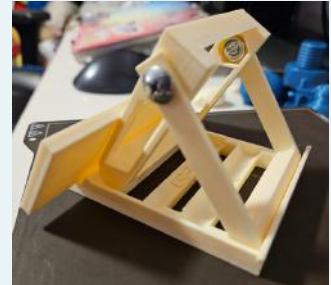
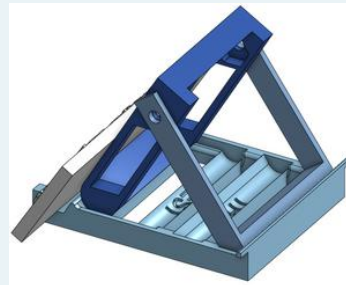
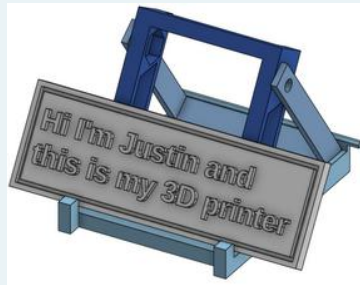
Justin Li Portfolio

Various 3D Printing Projects

All projects and more can be seen [here](#) on my portfolio website!!

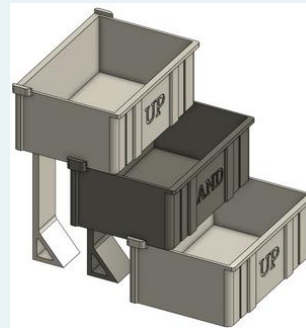
Adjustable Textbox Stand

- Designed to be a stand with three adjustable angles that are ~20° apart
- Fastened together using two #10 machine screws and two nuts
- Clearance holes are close fit



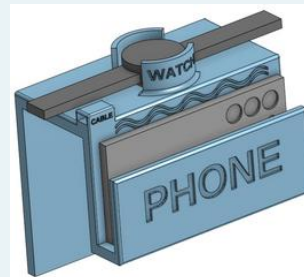
Sliding Desk Organizer

- Inspired by fish tackle box design
- Multiple boxes can be stacked
- Designed to fit under my monitors with wires running under and behind it
- Can slide forwards and backwards to save space and slow down dust accumulation



Bedside Phone and Watch Charging Stand

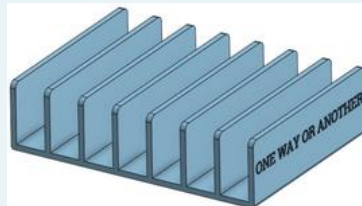
- Designed to be able to fit atop my rear bed board and within reach while I sleep
- Able to snugly hold my phone, my smart watch, and both charging cables



Nespresso Pod Holder

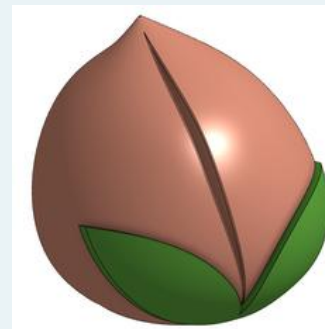


CD Display Case



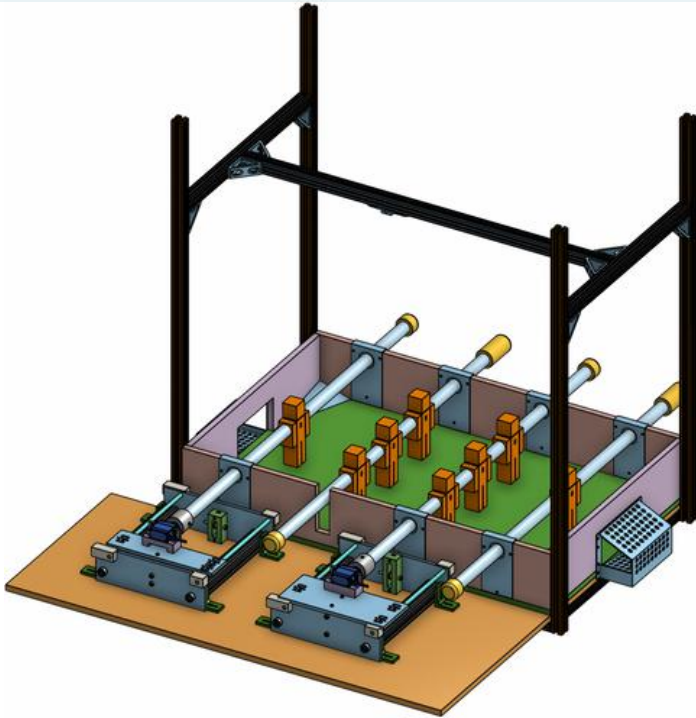
Longevity Peach Bun

- Real peach bun
- CAD peach bun
- 3D printed peach bun



- **Mechanical Lead** for the **Final Year Capstone Design Project**
- Objective is to create a functional **player vs. robot foosball table** that can simulate a player vs. player experience, with two player rows controlled by a human and two player rows controlled by software
 - Ball movements can be detected by a **camera mounted** above the playing field
 - **Software/AI and hardware** to control movement of player rows to simulate gameplay
- Collaborated with a team of 5 to form different one-person subteams
 - Mechanical, Hardware, Software/AI, Computer Vision System, and Integration

Click [here](#) to see a video of the Goal Guard Guru in action during our capstone symposium!



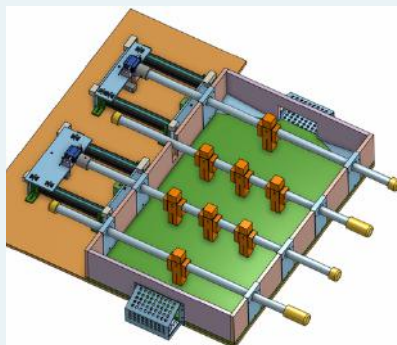
Camera Mount + Table Frame

- 1" x 1" aluminum rails and brackets for stability and flexibility



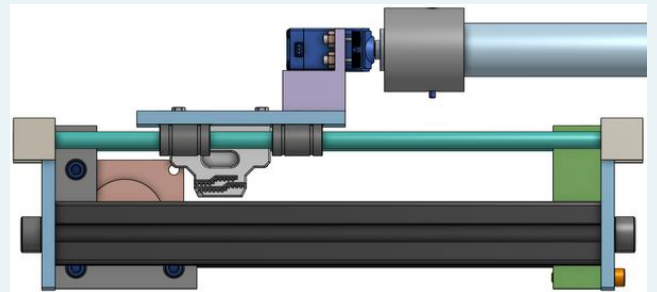
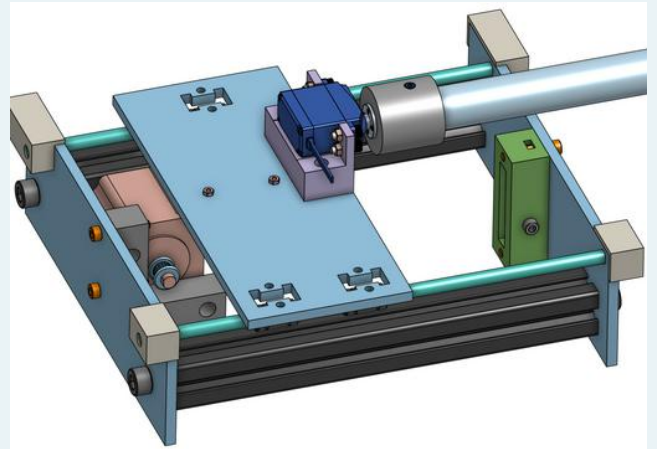
Foosball Table

- Table assembled with 0.5" plywood
- 1" aluminum rods
- Twelve 3D printed players/figurines
- 3D printed rod end caps and goal nets



Actuator Assemblies

- Stepper motor and a belt driven rod actuation system for **linear movement**
- Servo motor for **rotational movement**
- Three bearing platform on top plate to follow the 2:1 binding ratio used in machine design
- Stepper motor is mounted on rear plate and belt pulley is mounted on front plate
- Belt holder attaches top plate to belt
- Fastened with socket head screws & hex nuts



Logo + Presentation Poster

- Created using Canva and Adobe Photoshop

Poster can be seen [here!](#)



- Project objective is to integrate **laser cutting technology** into the **prototyping process** at *Lumentum* in order to build low cost, high precision templates for different applications in the production process
- Current templates are sent out for machining, leading to high costs and long lead times; implementing an in-house laser cutting machine is a potential solution if one that fits the company's needs can be found
- All assembly prototypes are protected by an NDA so a sample template with all the required cutting features that needed to be tested was designed and sent to many different companies selling laser cutters
- Template was designed on **Solid Edge**, **3D printed** with an industrial 3D printer, and measured using a **Coordinate Measuring Machine (CMM)** and a **SmartScope** 3D Multisensor Measurement System

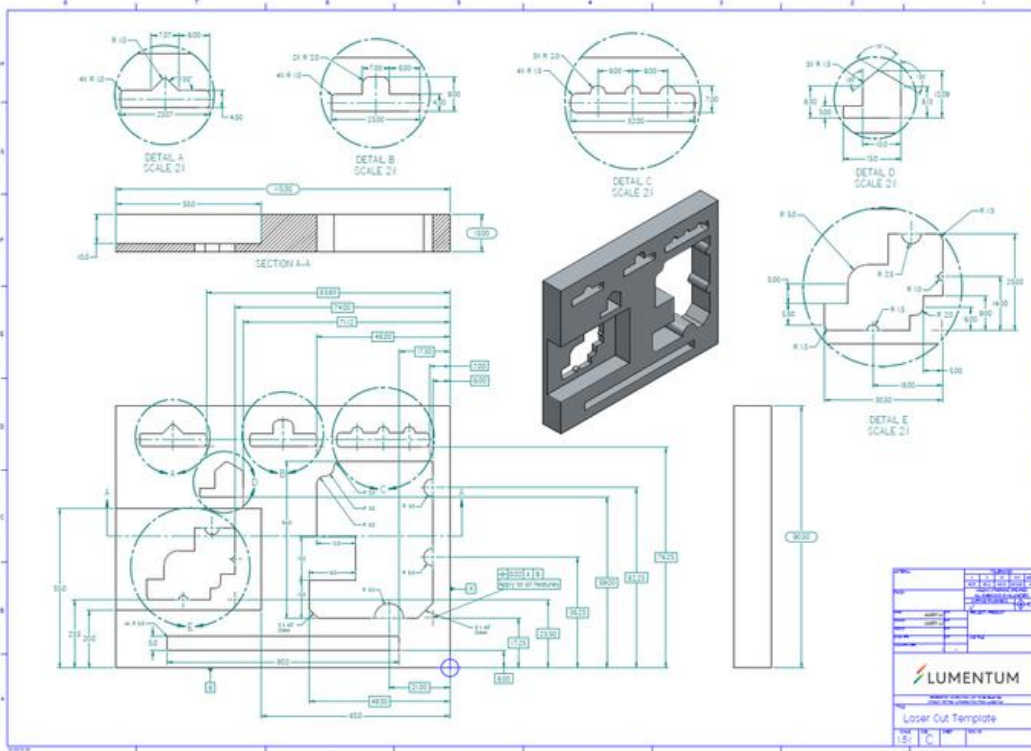
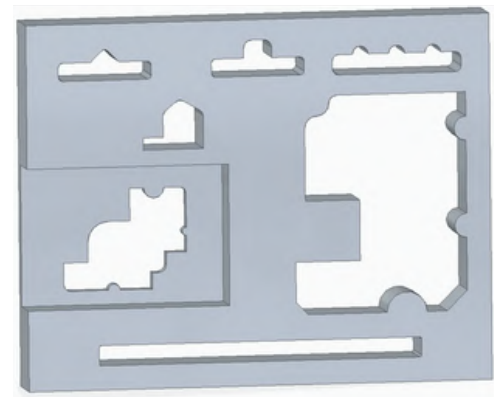
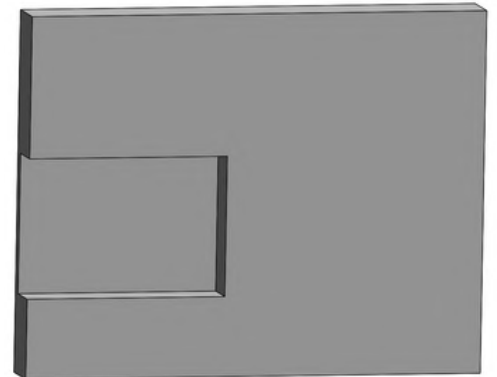
Designs and Drawings

- Design was created in order to include features to test for laser accuracy, precision, and tolerances
 - Chamfers, fillets, pins, holes, rounded edges
- Some features are extremely similar to how they look in the production-ready templates, only with different dimensions
- An **engineering drawing** following **GD&T** for the template was created in order to properly measure the accuracy of laser cutters
- Once the template was done, a design with no feature cut-outs was created in order to be used as a sample and sent to companies so that it could be laser cut and returned for measurement

Click [here](#) to see the drawing in full size!

Factors to consider:

- 3D printing material
 - Ultem, MC Nylon, PLA, etc.
- Types of laser cutting machines
 - CO2, Fiber, Waterjet
- Liaising with companies



3D Printing

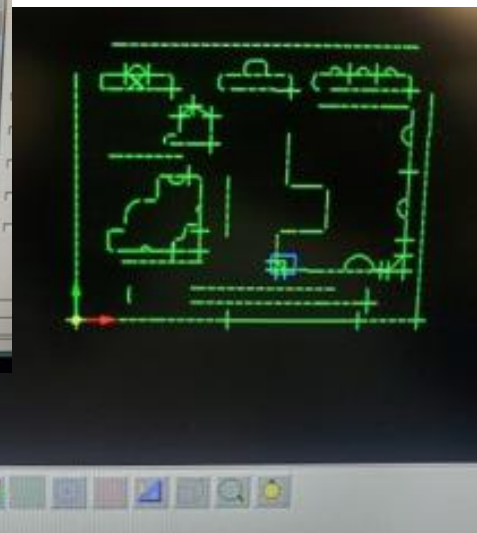
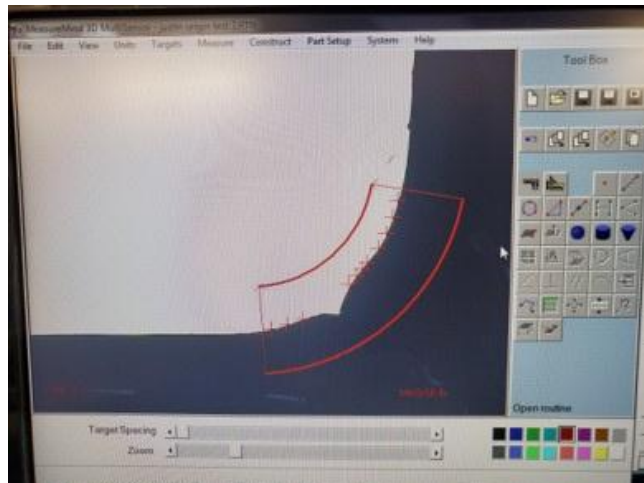
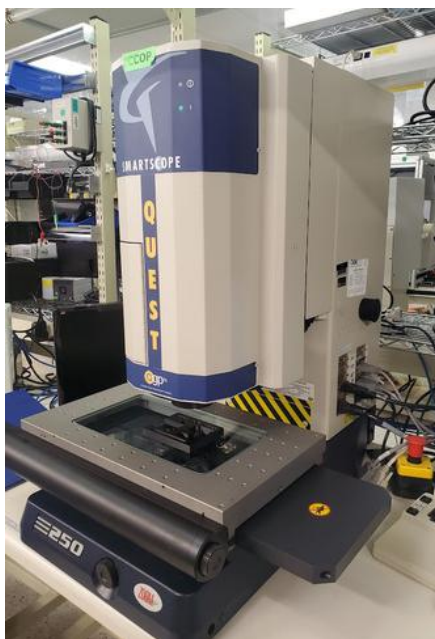
- Industrial **3D printer** was used to print templates & samples
- Different materials and thicknesses were used in order to test their how well they would be laser cut
- Black ABS sample on the right printed as a reference



Measuring the Features

- The SmartScope is a visual inspection machine and measurement station with a microscope camera
 - Contains metrology software so routines can be created and programmed to follow specific sets of accurate measurements that are repeatable
- **Repeatable**, so that all the samples can be quickly and easily measured when returned
- **Accurate** is also important, since data can be used to compare between cuts from different companies

Click [here](#) to see a video of the SmartScope program in action!

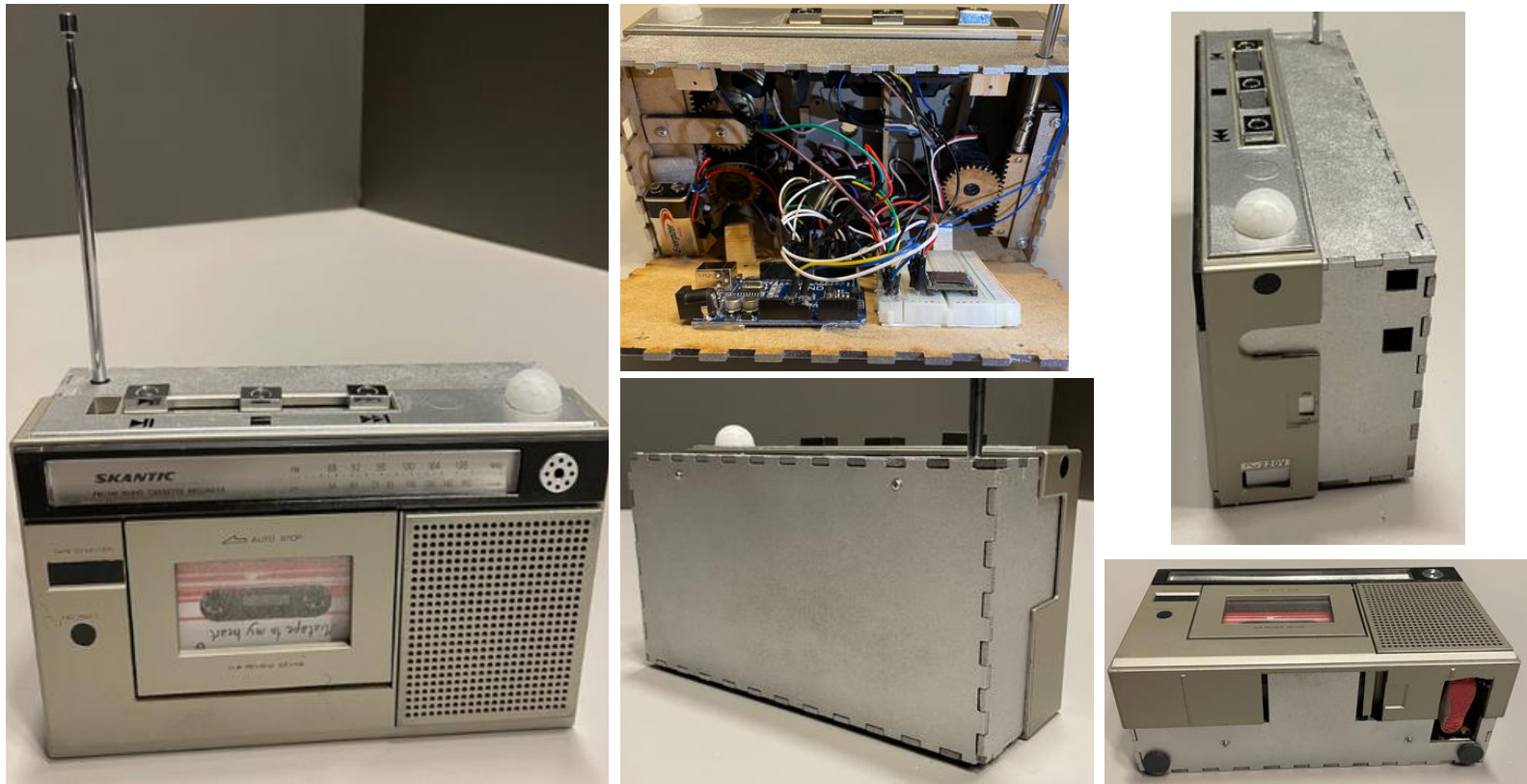


Interactive Custom Cassette Player

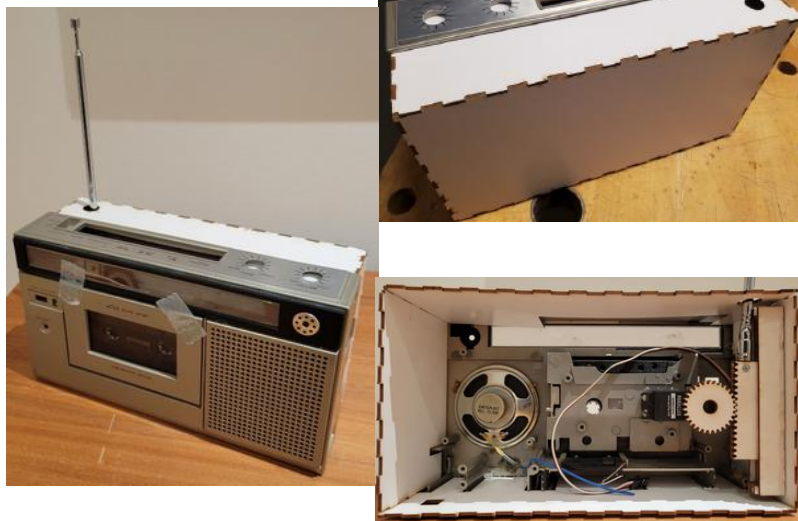
Dec 2022

- Project completed for a [Rapid Prototyping course](#) while on a student exchange term in Lund, Sweden
- Collaborated as a team of 4 to create a custom interactive cassette player
- Internal and external designs were completed using [SOLIDWORKS](#), [Arduino](#) components, [3D printing](#), [laser cutting](#), [Adobe Illustrator](#), and [Figma](#)
- Final product must be a robust box that is alluring to interact with and will deliver different forms of motion and feedback in order to elicit an emotion or reaction from the user

Click [here](#) to see how it works!



First Prototype



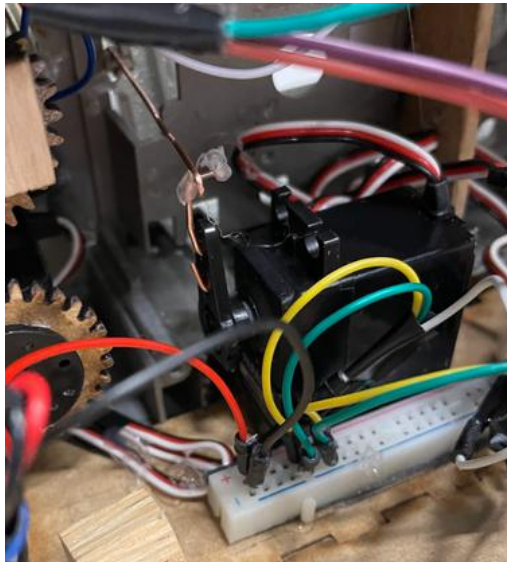
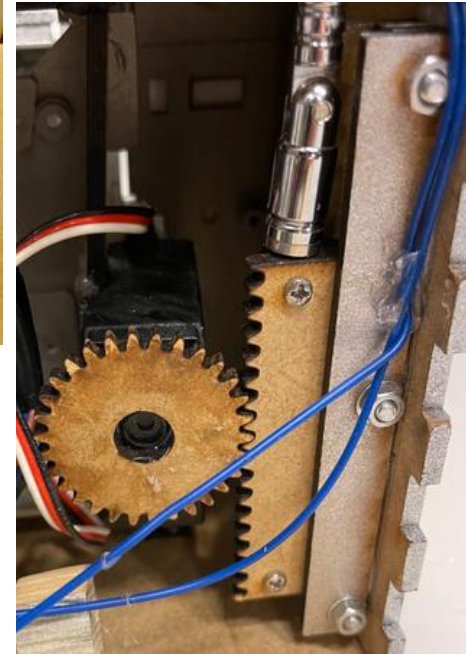
Second Prototype



Mechanical Functions and Internal Design

Moving Antennae

- Materials
 - 180° servo motor
 - Laser cut rack and pinion
 - Laser cut linear track
 - 2 screws
 - 3 nuts, bolts, and washers
- Laser cut parts are from a 3mm MDF board
- Rack consists of a double layer of MDF for more stability
- Linear track consists of two inner layers of MDF where the rack slides and two outer walls to keep the sliding rack from tilting side to side
- Screws and bolts hold the layers of MDF together

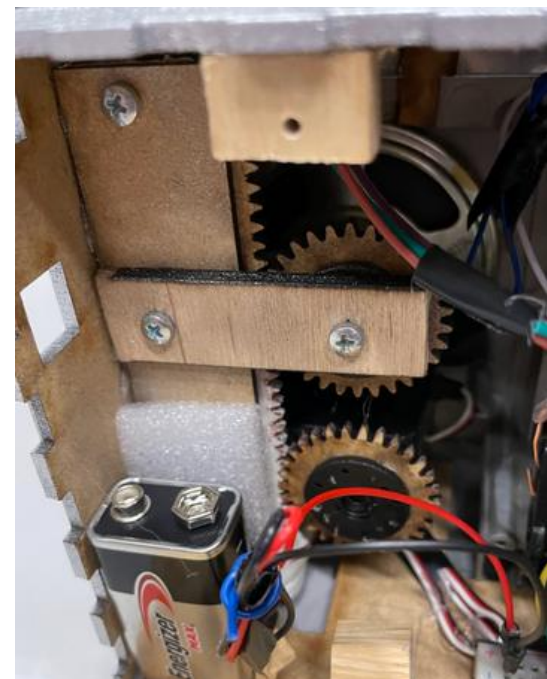


Flapping Cassette Door

- Materials
 - 180° servo motor
 - Paper clip linkage with hot glue
- Paper clip has been bent to form a rigid linkage and hot glued at joints to keep it secure
- Cassette door falls open with a slight push and is pulled back closed using the paper clip linkage and servo mechanism

Dancing Cassette Player

- Materials
 - 180° servo motor
 - 2 laser cut pinion gears
 - Laser cut linear gear with side extensions
 - 3 screws
- Mechanism is similar to the moving antennae, except there is now an extra driven pinion gear that is held secure in order to keep the rack from tilting side to side or misaligning with the gears



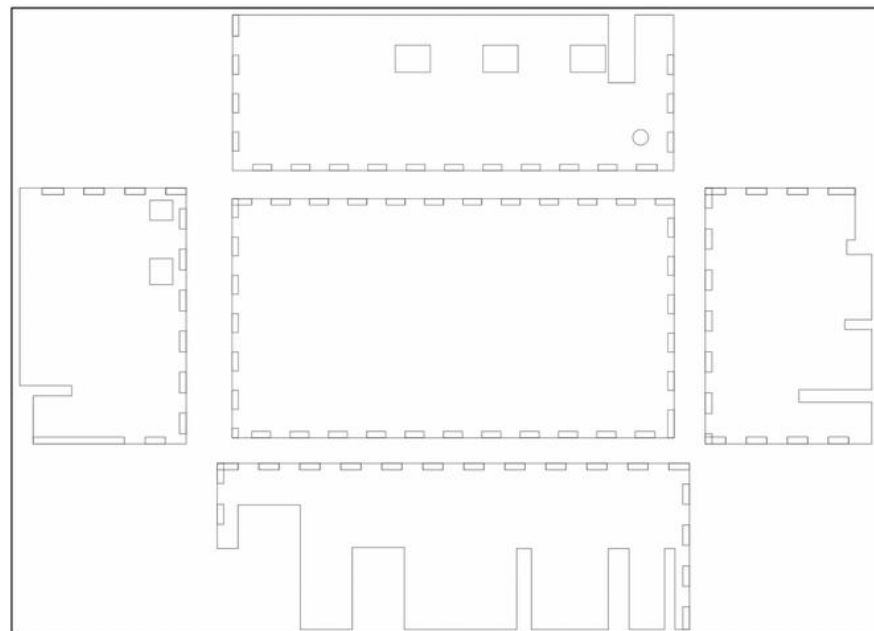
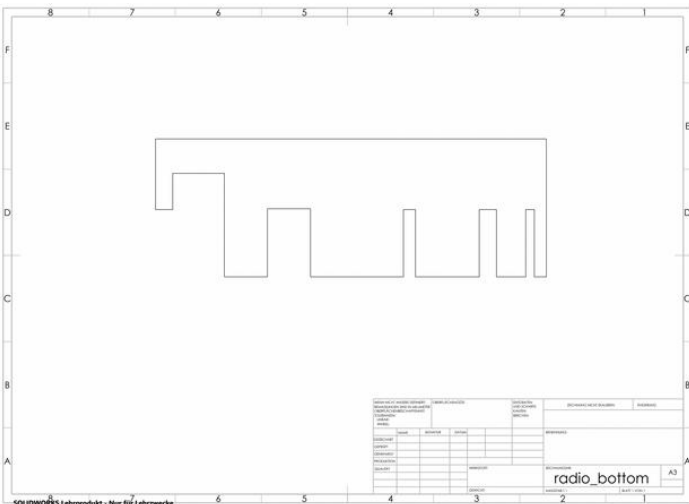
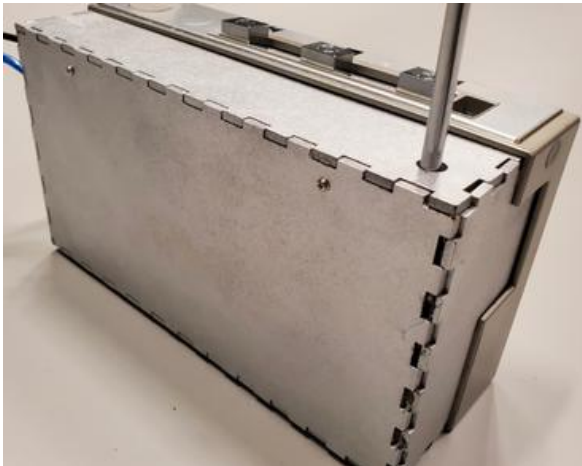
External Design

- Enhanced using a real cassette player that was purchased
- Reused parts for the final design:
 - Front half of the cassette player
 - Cassette
 - Speaker from the original cassette player
 - Antennae
 - Three radio buttons from the original button assembly

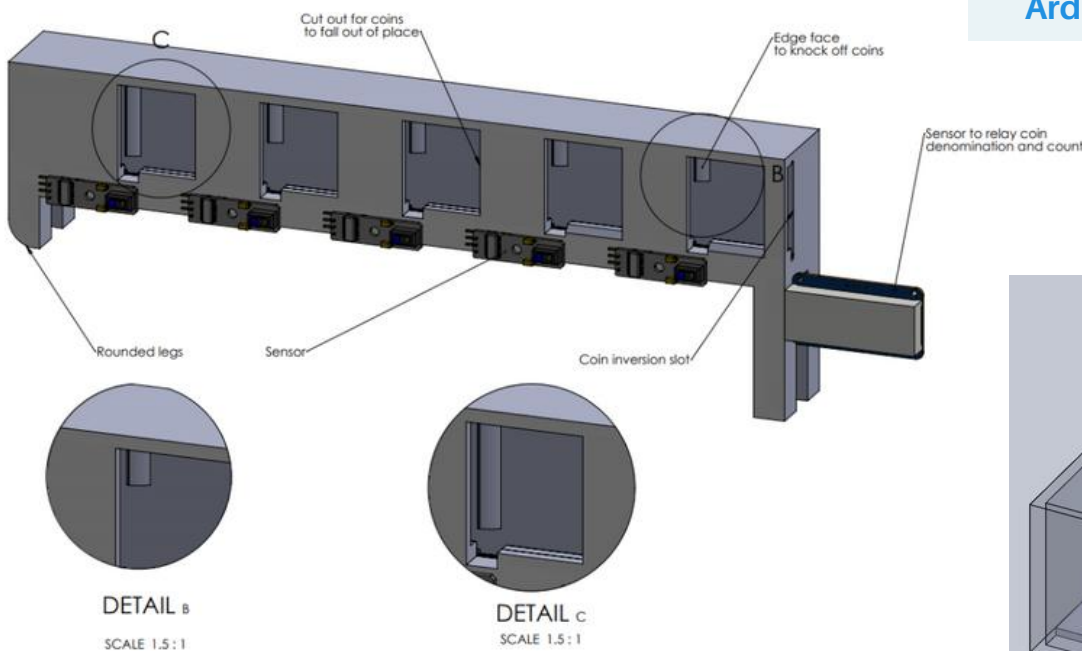
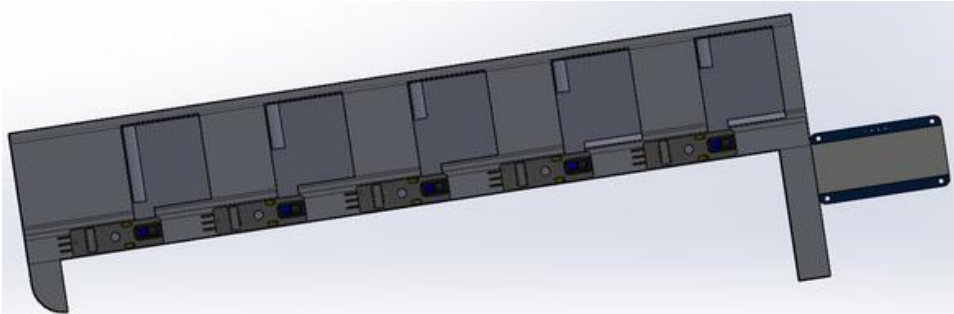


- New parts for the final design:

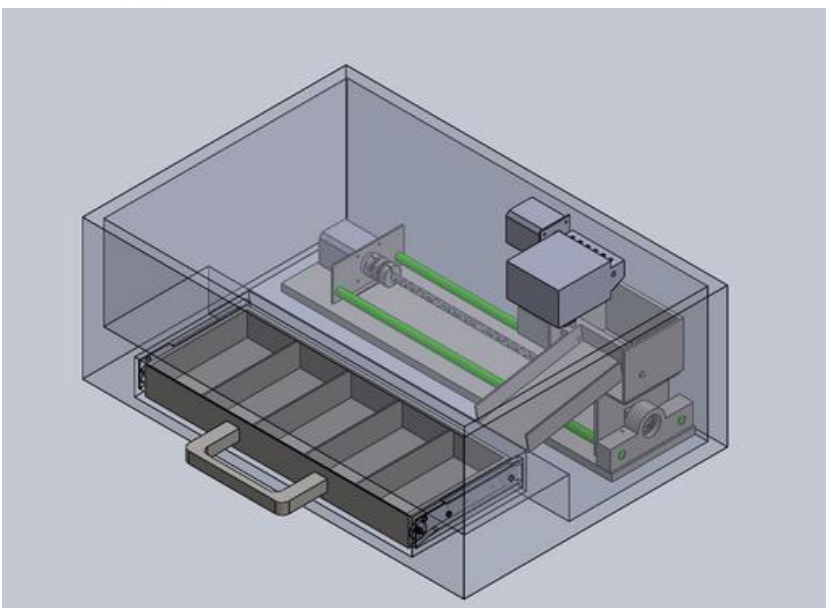
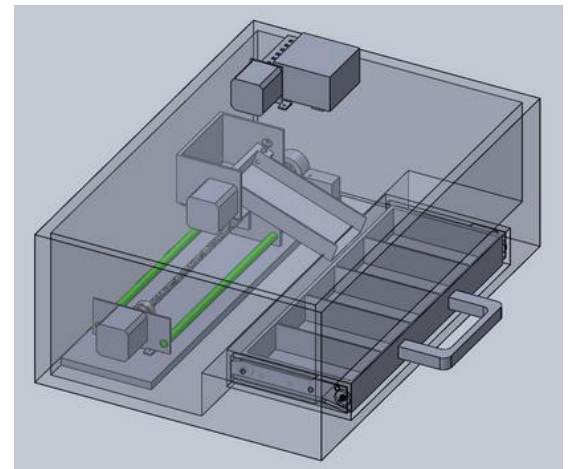
- Disco ball
 - Using a sensor cover and a NeoPixel LED
- Shoe for comedic appeal
 - **3D printed** and painted
- Box extension
 - Drawn on **SOLIDWORKS** and **Adobe Illustrator**
 - Laser cut from 3mm MDF board using the **Epilog Legend 36EXT laser cutter**



- Designed on **SOLIDWORKS** as a solution to a COVID-19 related problem to minimize the chance of transmission between cashier workers and customers through physical contact with Canadian currency
- Created as an idea for a two person **design challenge** during the school term when the global pandemic was initially declared

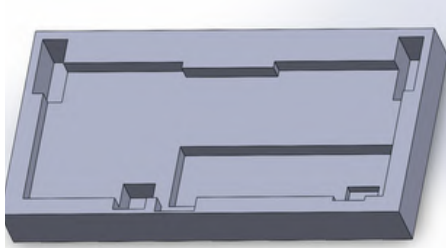


- **Fully mechanical** coin sorting machine
- Basic function is to sort the inserted coins from largest to smallest diameter
- Auxiliary function is to add up the total value using sensors and an **Arduino** seven-segment display

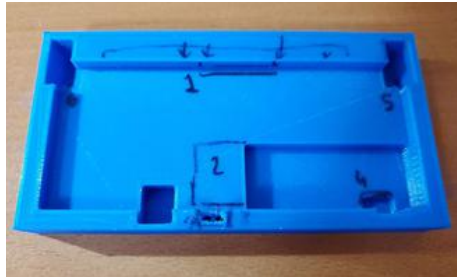


- Mechanical bill sorting machine with some **electrical components**
- Basic function is to sort the inserted bills using a colour sensor at intake, a motor powered tray assembly, and a motor powered linear motion track
- Auxiliary function is to allow for a quick method of removing bills after storage compartments are full

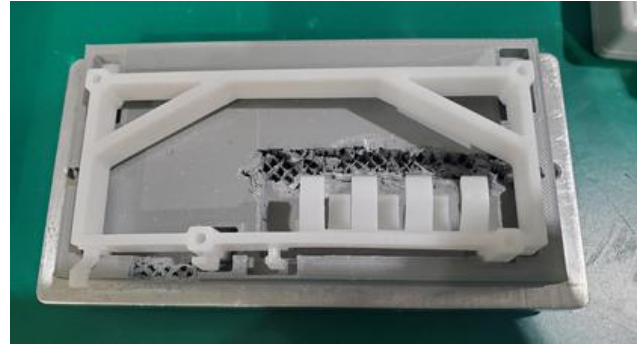
- At Vexos, one of my roles was to prototype jigs and fixtures in order to ramp up **quality and production**
- Measured, designed, and **3D printed** a tool mold that can be used by the production team to hold a custom part in place while affixing a circuit board to it and wiring it



- Measured to precise dimensions using calipers
- Designed on **SOLIDWORKS**



- **3D printed prototypes** using Ultimaker Cura software for production to test
- Noted potential modifications and printed new prototypes



- Communicated with production to test the design and completed more modifications as necessary
- **Increased production line efficiency** by eliminating the need for workers to manually hold parts during tasks such as attaching electronics, wiring, and soldering

Toy Design Project

- School term project to collaborate with a team of 4 and create a unique toy for pre-adolescent children
- Concept was a battery powered spinning top with a detachable lid that would reveal and eject other toys on the inside when the top came into contact with something
- Designed on **SOLIDWORKS** and **3D printed** at the university's Rapid Prototyping Centre using **GrabCAD**
- Various prototypes were designed, printed, and tested in order to maximize the success of the project

